



TECTRUM[®]

**FLEXIBLE.
INNOVATIVE.
CUSTOMISED.**



THE TECTRUM[®] HOOKLIFT

DESIGNED FOR PRACTICAL USE!

MEILLER hooklifts are designed for maximum productivity – from the very first day and throughout their entire service life. MEILLER stands for ultimate product quality and value retention. The high-quality workmanship is created using state-of-the-art processes and benefits from the use of high-strength materials. The frame construction is extremely stable and well protected against corrosion.





Cost-effective use of TECTRUM in the construction industry



... and in the waste and disposal sector.

TRANSPORTING ECONOMICALLY

The TECTRUM hooklift lets you transport skips powerfully and economically. MEILLER hooklifts are designed for standard lorry chassis with standard tonnages. A reduced tare weight allows you to transport high payloads. Successfully proven in the construction and waste management industries and made for harsh practical conditions. Benefit from fast operating cycles and save valuable time on every journey. The efficiency package enables you to achieve industry-leading working speeds. The handling and operation of TECTRUM are both simple and practical.

HYDRAULIC SYSTEM QUALITY

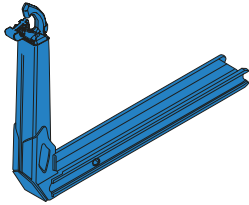
The high-quality MEILLER hydraulic system ensures work operations are fast and responsive – and all this with very low-noise operation. The MEILLER hydraulic system enables optimum payloads and is practically maintenance-free.

PRODUCT RANGE

THE IDEAL TECTRUM® HOOKLIFT FOR EVERY REQUIREMENT

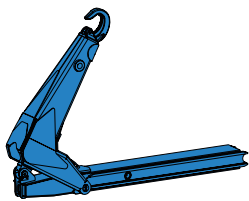
TYPE	RS21	RS26	RL18	RK14	RK30
Nominal load	21 t	26 t	18 t	14 t	30 t
Number of axles	3 axles	3 or 4 axles	3 axles	2 axles	3 or 4 axles
Suitable chassis	up to 28 t	over 28 t	up to 28 t	Up to 19 t	over 28 t
RK weight	2,075-2,330 kg	2,290-2,770 kg	1,980-2,250 kg	1,675-2,080 kg	3,095- 3,670 kg
Height	T 230 mm TS 255 mm	T 245 mm TS 270 mm	190 mm	250 mm	T 280 mm TS 305 mm
Skip type	DIN 30722	DIN 30722	DIN 30722	DIN 30722	DIN 30722
Lifting arm type	T, TS	T, TS	T	T	T, TS





Telescopic hook arm (T)

- When it has to be simple and sturdy
- Optimum for skips that often have the same size



Telescopic and swivelling hook arm (TS)

- For more skip variety
- When heights are low
- When the skip has to be pulled on flat
- When the skip is to be transferred onto rail wagons



YOUR INVESTMENT – SAFE AND SUSTAINABLE

DURABLE AND VALUE-PRESERVING

KTL IMMERSION PRIMING PROCESS

- Excellent corrosion protection
- Resistant to scratches and stone chips
- Complete and even coating
- Uniform surface finish



Optimum corrosion protection due to cathodic dip primer-coating and also top-coated steel components.

MODULAR, BOLTED CONSTRUCTION

- Mounting parts can be retrofitted or modified at any time, as the base frame is pre-equipped accordingly
- Weld-free pre-mounting and final mounting
- Quick replacement of wear parts



Bolted, freely interchangeable skip supports according to customer requirement.

SKIP LOCK

MEILLER hooklifts provide you with reliable, appropriate and always suitable skip securing.



Hydraulic skip locking system

DRIVING SAFETY AND STABILITY

Gain more driving safety and stability thanks to the low centre of gravity of the TECTRUM hooklift. The reduced overall height enables more swivel and tipping space in underground garages or covered spaces.



SAFETY PACKAGE

The safety package includes an internal hydraulic locking system and the hydraulic underrun protection.



Hydraulic underrun protection

EFFICIENCY PACKAGE

The efficiency package includes the quick movement, speed movement, sequence control and soft stop systems.

When rolling off, the load-dependent quick movement valve accelerates the extension of the swivel cylinder. The speed movement system ensures high speed when retracting.



OPERATION

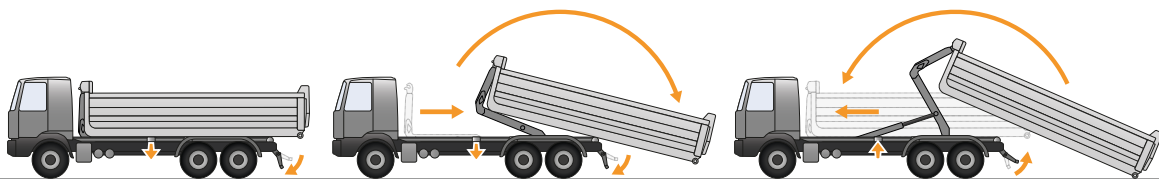
SIMPLE AND CONVENIENT FOR ULTIMATE WORK SAFETY

Operate your TECTRUM hooklift conveniently from the cab using the feed valve – or use the i.s.a.r.-control radio remote control from a safe distance and from a location that offers you the best view. The pre-programmed sequences of the optional sequence control make it easy to operate at the touch of a button. You save time, avoid errors in the sequence of operating steps and thus improve the safety of the operating cycle.

I.S.A.R.-CONTROL – YOUR ADVANTAGES

- Long radio coverage range
- For rugged use:
 - Can also be operated with gloves
 - Illuminated buttons for night operation
 - Integrated antenna
 - Circumferential rubber border
- Good handling:
 - Control elements arranged logically and clearly
 - One-hand operation possible
 - Low weight of just 340 g
- Optimised power supply (Li-rechargeable battery without memory effect)
- Engine Start/Stop button centrally positioned
- Loss protection and magnetic holder

2 DIFFERENT PROGRAMME SEQUENCES ARE AVAILABLE FOR BOTH THE FEED VALVE AND THE I.S.A.R.-CONTROL RADIO REMOTE CONTROL:

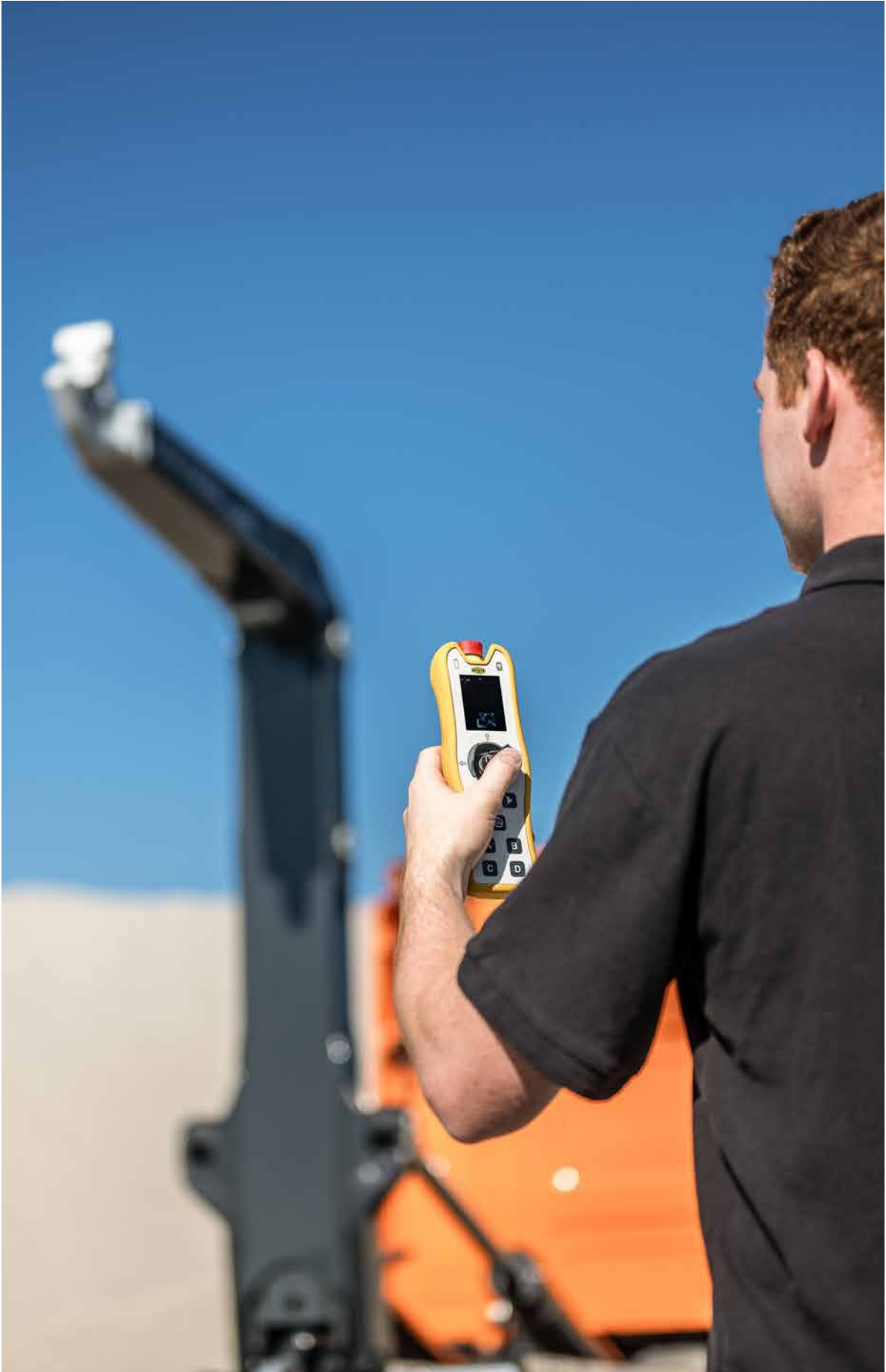


1. Hooklifting the skip:

- Extend axle supports
- Unlock skip lock
- Retract and swivel out lifting arm
- Retract underrun protection

2. Pulling up a skip and preparing it for travel:

- Swivel in and extend lifting arm
- Lock skip lock
- Retract axle supports



FEATURES FOR PRACTICAL USE

INNOVATIVE AND EFFICIENT IN EVERY DETAIL

LAMPS WITH LED TECHNOLOGY

Benefit from greater road safety and improved visibility with MEILLER lamps with LED technology. A striking design is combined with a long lifetime and high efficiency. LED technology also saves time and costs as there is hardly ever a light failure.

MEILLER lighting:

- LED working lights
- LED warning around lamps
- Side marker lamps

REAR UNDERRUN PROTECTION

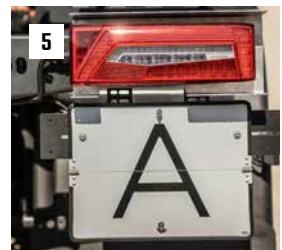
The MEILLER rear underrun protection complies with the legal regulations.

- Extendable underrun protection, hydraulic or mechanical
- Optional variants for use in combination with finisher, hydraulically or mechanically

MOUNTING PARTS AND ACCESSORIES

- Side plastic or stainless steel tool boxes
- Side extendable net boxes
- Side impact protection
- Camera systems
- Mudguards, aluminium or plastic
- Leaning aluminium ladder
- Shovel and broom holder
- Plates, markers, fire extinguishers, wheel chocks, spare wheel holders

- 1 Rear view
- 2 Rear light protection
- 3 Net box
- 4 Wheel chocks
- 5 Multifunctional plates with zinc-nickel surface
- 6 Leaning ladder
- 7 Shovel and broom holders



QUALITY AT MEILLER

WHAT DOES QUALITY MEAN TO US?

For more than 170 years, the name MEILLER has stood for the highest product quality and outstanding innovative energy. Our aim is to provide you with reliable and durable products that can withstand even the harshest conditions.

DEVELOPMENT QUALITY

MEILLER is known for outstanding quality in the development phase. Our design engineers develop solutions to meet customer requirements. Advanced endurance tests, long-term trials and intensive salt spray tests are an integral part of our development process and ensure the excellent quality of our products. Customer proximity is important to us: we actively involve our customers in the development process and in practical field tests. Our aim: to develop the best tool for your application. Continuous material testing and process monitoring ensure the quality of the products after the development phase.

HYDRAULIC SYSTEM QUALITY

The hydraulic systems from MEILLER, developed and manufactured in Munich, form the core of our products. They are made of high-quality materials and are designed to enable the best payloads with minimal tare weight. Thanks to optimum cylinder sizes and wear-resistant, dirt-resistant components, our hydraulic systems are practically maintenance-free and contribute decisively towards the longevity and efficiency of your vehicle.

PRODUCT QUALITY

The high quality of our products is the result of decades of experience and constant improvement. Our surface concept promotes the highest level of corrosion protection. The basis is a cathodic dip coating or a wet primer with a subsequent top coat. In addition, body-cavity sealing and bolted mounting are carried out on components that have already received a surface treatment. The durable MEILLER hydraulic system, combined with high-strength steel and floor plates made of at least HBW 450 steel, guarantee the characteristic MEILLER robustness and high resale value.

SERVICE QUALITY

Our experienced and competent service team works continuously to minimise your downtime. An extensive service network, a mobile after-sales service and customer service centres around the world ensure that you receive help quickly and reliably. Our sophisticated logistics enable us to deliver original parts to the required location as quickly as possible. This ensures that your MEILLER product is always ready for use.

1 Development quality

2 Service quality

3 Product quality

4 Hydraulic system quality



MEILLER TIPPER

ECONOMIC. RELIABLE. INNOVATIVE.

COMPANY

MEILLER stands for durable, practical and technically sophisticated tipper superstructures that can be adapted to individual requirements with many options.

MEILLER employees work every day to make the products safer to use, practical and convenient to use in practice.

MEILLER relies on state-of-the-art manufacturing processes throughout the entire process chain and continuously optimises product development in order to always keep one step ahead of increasing quality standards.

Steel components, hydraulic systems and control technology come from a single source at MEILLER – the unique compatibility of the components speaks for the efficiency of the MEILLER products and their long lifetime.

EVERY MEILLER EMPLOYEE
IS A GUARANTEE FOR THE HIGH QUALITY OF ALL MEILLER PRODUCTS.





SUSTAINABLE INTO THE FUTURE

Certified environmental management in accordance with DIN 14001:2015 and EMAS demonstrates that MEILLER is committed to the responsible and efficient use of resources.





You don't want to miss anything?
Subscribe to our newsletter!

F.X. MEILLER Fahrzeug- und Maschinenfabrik GmbH & Co KG
Ambossstraße 4 | 80997 Munich | Germany
T +49 89 1487-0 | info@meiller.com | meiller.com

1613_En-731-0325

Subject to technical modifications and errors.
Illustrations may show special equipment.